

Disclaimer: This document is for informational purposes. It is not a commitment to deliver any material, code, or functionality, and should not be relied upon in making purchasing decisions.

Technovative SmartSuite™: SmartPlatform

Key Features

- Cool visualizations drag-and-drop designs
- Suitable for non-developers and developers
- Ubiquitous access via web browser
- Apps can be process-centric, data-managed, and/or systems integrated
- Define a Smart Contract together with tokens and eWallets
- Select fields can be designated to be on chain
- Flexible deployments: local servers, public or private cloud
- Agnostic to any OS, Databases, and application servers
- Support for Ethereum and/or Hyperleger Blockchain

Advantages

SmartPlatform, an award-winning product, is the first to combine Blockchain, Business Process Management and rapid dApp development into a codeless delivery platform. It uses an Agile approach, whilst supporting a Lean IT setup, combined with DevOPs to quickly rollout Apps to meet a rapidly-changing business environment.

1.1 Functions Overview

Application Center

- The Application Center is a customizable portal that provides users with fast access to the latest deployed apps.
- Seamless integration with both external and internal app market for easy access, readily available apps and plugins for immediate use or modified for reuse.

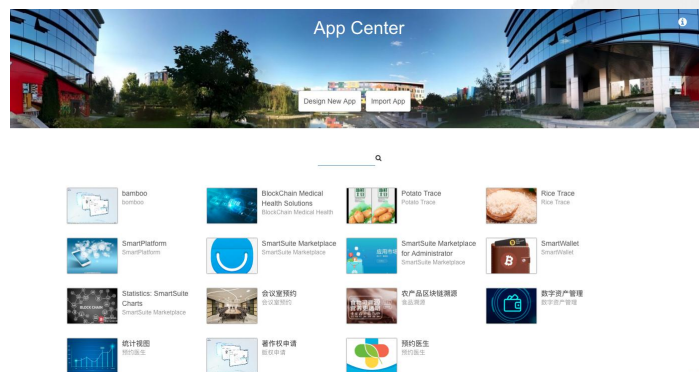


Figure 1. SmartPlatform Application Portal

Process

- Drag and drop visualization to build and configure business processes based on smart contracts
- Support for simple or complex processes, including reminders, synchronous or asynchronous deadlines and other advanced capabilities
- Support embedding Data on the Blockchain, and incorporating Smart Contracts and tokens rewards in the

- Web-based visual design that enables non-programmers to easily build and maintain applications
- Flexibly configure the Blockchain environment and its data on chain operations
- Faster time-to-market from months to weeks or even days, watch one build a prototype in a matter of minutes!
- Build the app on desktop, mobile, and cloud all at once

Other SmartSuite™ Products

- SmartTrader
- SmartWallet
- SmartLoyalty
- SmartIOT

process

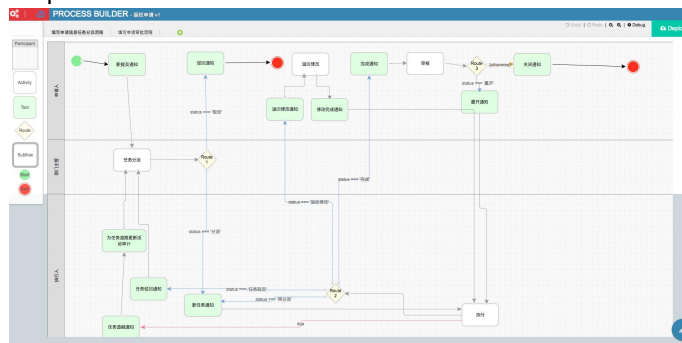


Figure 2. SmartPlatform Smart Contract-Based Process

Form

- Drag-and-drop to visual build and configure forms
- Determine what elements goes on the Blockchain
- Provides many powerful form elements, including grids, spreadsheets, signatures, etc. to meet a variety of needs
- Various features for enterprise applications, including forms, lists, UI, workflow, user security, and integration
- Strong plugin architecture and APIs, enable developers to extend the functionality
- Download a variety of existing applications and plugins from SmartPlatform Market
- Works on multiple OS, databases and application servers to suit your infrastructure requirements

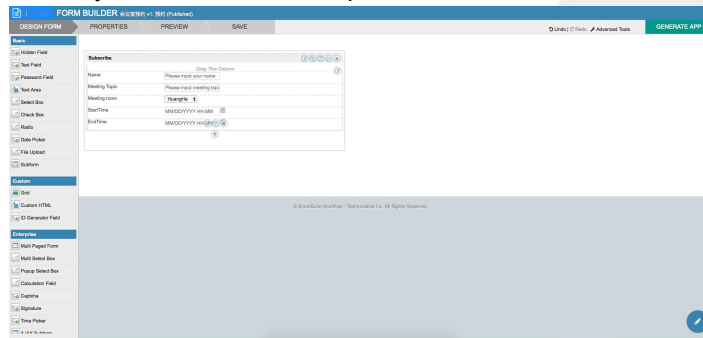


Figure 3. SmartPlatform Form Designer

List

- Drag and drop to visually build and configure table lists and reports
- Built-in support for filtering, sorting, paging and exporting to various document formats



Figure 4. SmartPlatform Lists/Tables

User Interface

- Say goodbye to the unpopular user interface in business applications, but use drag-and-drop to build user interface centred around Google's Material Design philosophy
- Responsive pages that automatically adapt to PC and mobile devices with support for many powerful user interface elements such as dashboards, calendar views and charts...



Figure 5. SmartPlatform User Interface

Blockchain Service Deployment

- Deploy Blockchain services using a user-friendly interface
- Intuitively add specific data fields on chain, and store the key data fields on the Blockchain.

1.2 Others

Determining the hardware specifications required to effectively run SmartPlatform involves many factors. The following are some recommended factors to be considered :

1. Total number of users
2. Maximum expected number of concurrent users
3. The number of apps running on the platform
4. The complexity of each app
5. The amount of data generated by each app
6. Network infrastructure

2. Operations Environment

2.1 Hardware Environment

No.	Equipment	Recommended Specs	Remark
1.	Main Server	16 Core—32GB—20M Bandwidth—500 SSD	Essential
2.	Data storage server	8 Core—16GB—10M Bandwidth—250G SSD	Essential
3.	Domain	Main domain name, alternate domain name, wallet management domain name	Active-Passive
4.	Dedicated IP	Each Server has at least 2 Dedicated IPs	Active-Passive
5.	CDN	Global Nodes	Active-Passive
6.	SSL	HTTPS	Server Side
7.	DDOS	More than 50G	Export deployment

2.2 Software Environment

No.	Support Software	Recommended Specs
1.	CentOS	V7.x
2.	Mysql	V 5.5.x
3.	Docker	Latest version
4.	Java Runtime Environment	V7.x

2.3 Browser Compatibility

No.	Support Software	Recommended Specs
1.	Google Chrome	Latest version
2.	Safari for Mac	Latest version (V8+)
3.	Internet Explorer	Latest version (V11+)
4.	Firefox	Latest version

3. Service Level and Contact Information

3.1 Support Service Level

Version	Support Services
Standard Edition	<ul style="list-style-type: none"> • Server maintenance and operating system-level software updates • First year free upgrades; • All technical issues are submitted and processed through the Technical Support Services

	<ul style="list-style-type: none"> • Technical support • 7x12 hours online customer service (Phone, WeChat Public Account)
Enterprise Edition	<ul style="list-style-type: none"> • Server maintenance and operating system-level software updates • First year free upgrades; • All technical issues are submitted and processed through our Technical Support Services • Dedicated technical support • 7x12 hours online customer service (Phone, WeChat Public Account)

Technovative Group Inc.

Company : <http://technovative.co/>

Platform : <http://s.technovative.co/jw>

Email : smartsuite@technovative.co

Tel. : (86-755) 2391 7323

Copyright ©2018, Technovative Group Inc. all rights reserved.

This document is provided for information purposes only and the contents hereof are subject to change without notice.

This document is not warranted to be error-free, nor subject to any other warranties or conditions, whether expressed orally or implied in law, including implied warranties and conditions of merchantability or fitness for a particular purpose. We specifically disclaim any liability with respect to this document and no contractual obligations are formed either directly or indirectly by this document. This document may not be reproduced or transmitted in any form or by any means, electronic or mechanical, for any purpose, without our prior written permission.